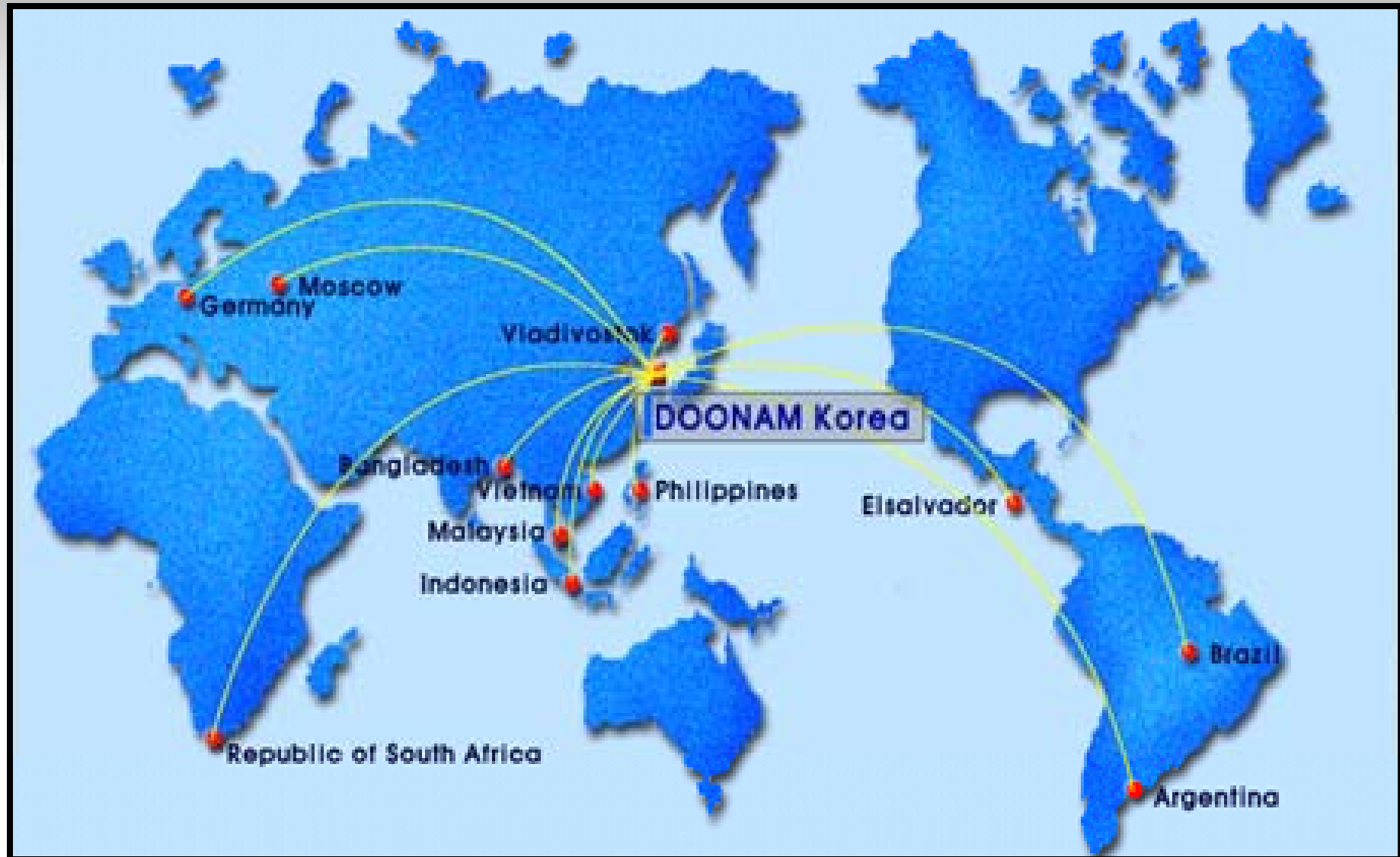


DOONAM BIOTECH Co., Ltd.
Company Profile

DOONAM
DOONAM BIOTECH CO., LTD.

DOONAM BIOTECH International



Greeting

We give you a hearty welcome for reviewing our presentation.

Nowadays, lots of information from mass media calls our attention to the fact that human beings are faced the shortage of reliable drinking water due to contaminations and pollutions in the high-technology industrial world.

Since 1980's, Doonam had one business only-providing the best water treatment systems for homes. We believe that the best way to enhance the quality of life for you is developing new environment-friendly water treating and purifying technology, especially for every room of your home where water is used.

We are making every effort in the field of :

- * Drinking Water Purifier System
- * Water Ionization System
- * Water Purifying System as Utility for Buildings and Homes
- * Development of Technology for Healthful Drinking Water

We're always trying to satisfy our customers with high-quality competitive products, and share of the benefits from all of Doonam business.

I hope you to keep contact with us for our updated information on new developments and products.

Thanks and Best Regards.

Sohn, Y. Myoung, president
DOONAM BIOTECH CO., LTD

History

Company Name : DOONAM BIOTECH CO., LTD.

Address : 141B-5L, #720-5, Gojan-Dong, Namdong-Gu, Inchon, Korea

Tel : 0082-32-821-6490~4 Fax : 0082-32-821-1661

Email : dn123@chol.com

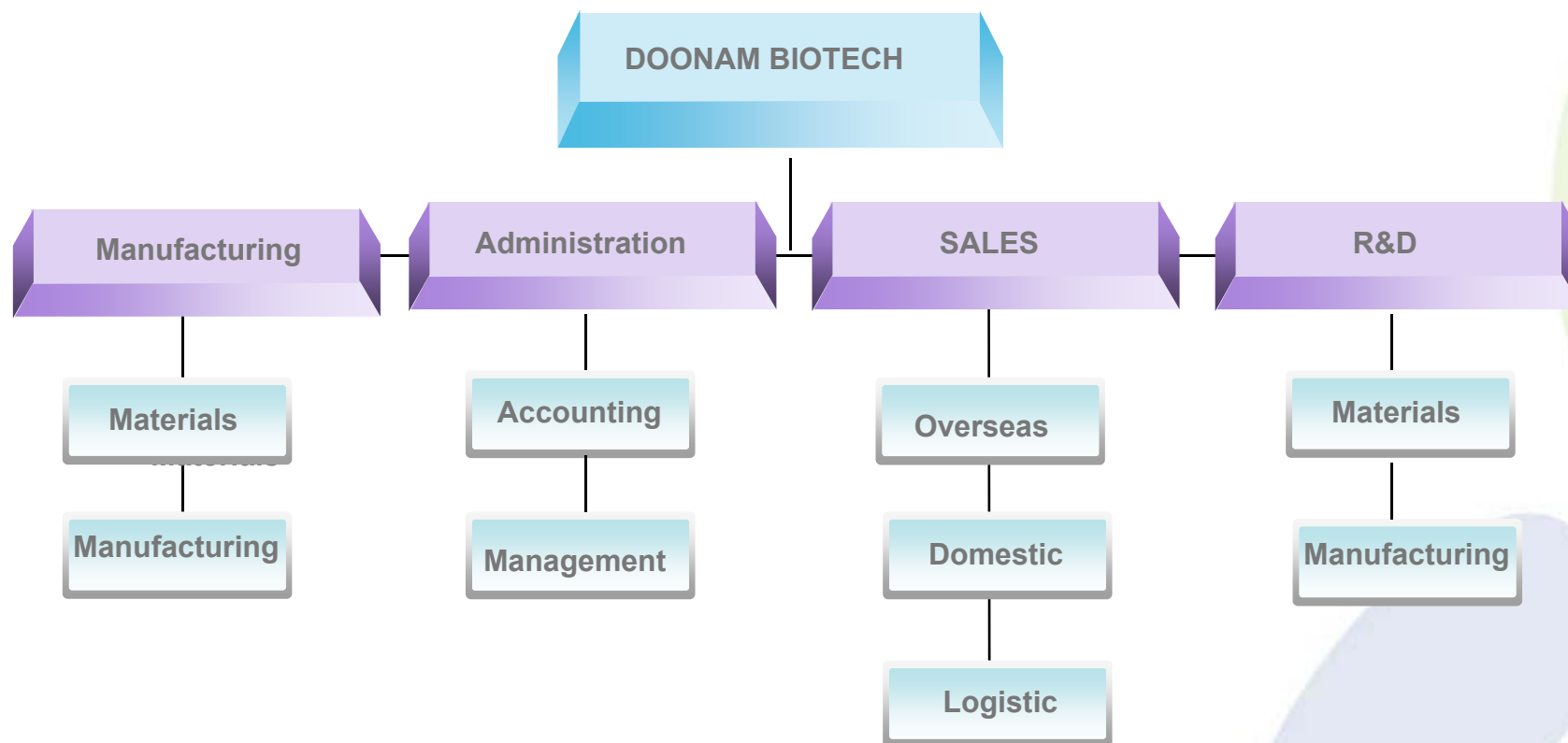
Home page : www.biodoonam.co.kr

Employee : 15 persons

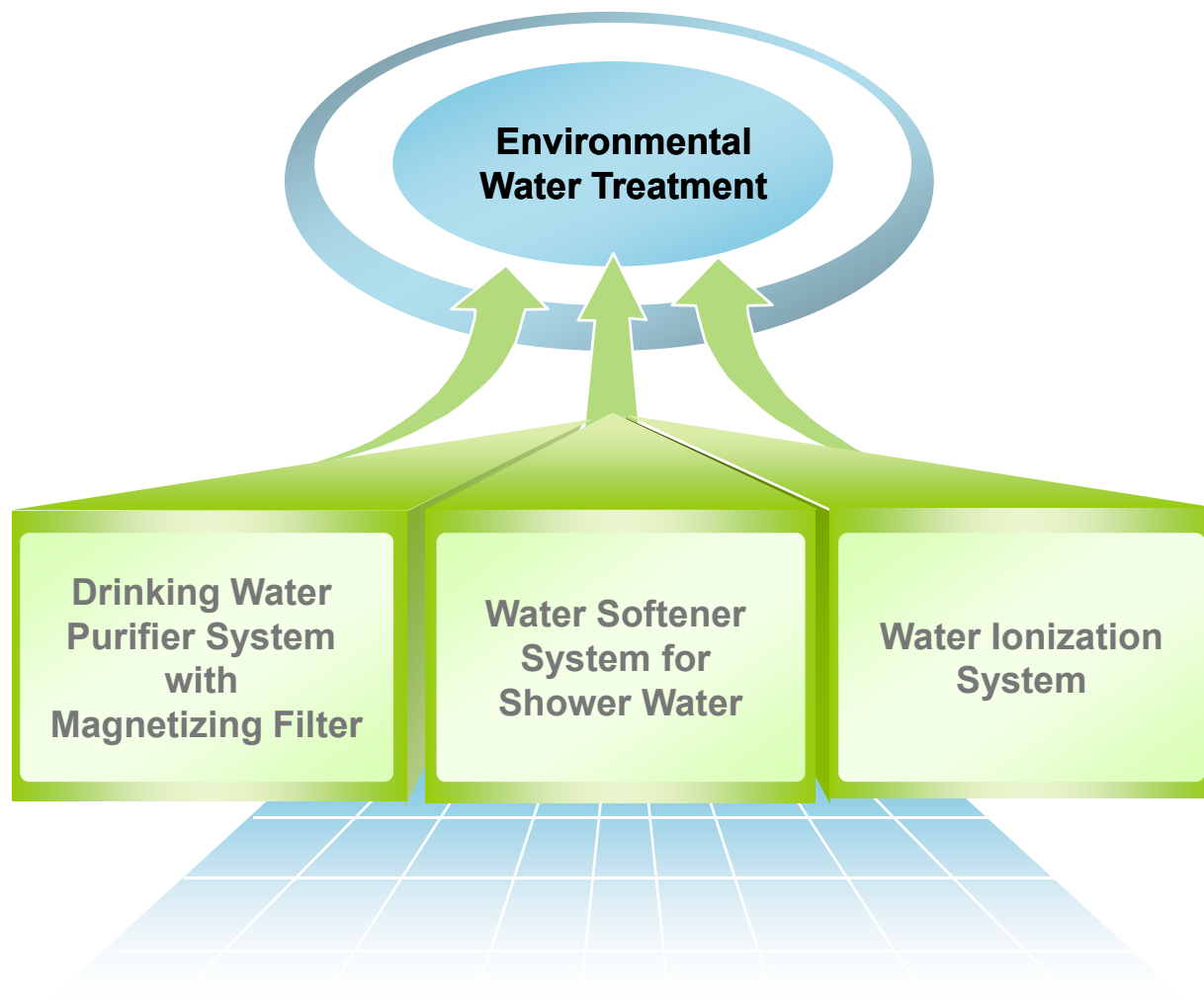
Turnover : USD2,000,000/year

Mar. 1995	Established Doonam Industry Co.,Ltd. in Bucheon, Kyunggi-Do, Korea
Aug. 1995	Acquired MUL(Water) Mark by Ministry of Environment
Jan. 1996	Started Export ' CoolMart ' Series to Asian & European countries
Apr. 1999	Relocated Factory to Namdong Industrial Complex, Inchon, Korea
Apr. 1999	Acquired 'GOST' Mark (Hygienic Certificate of Russia)
Jun. 2002	Developed ' NEOS ' Series
Oct. 2002	Acquired FDA Certificate of Analysis for our Carbon Block Filter
Jan. 2003	Acquired ISO 14001 Certificate of Registration
May 2007	Sales Promotion Tour to CIS countries

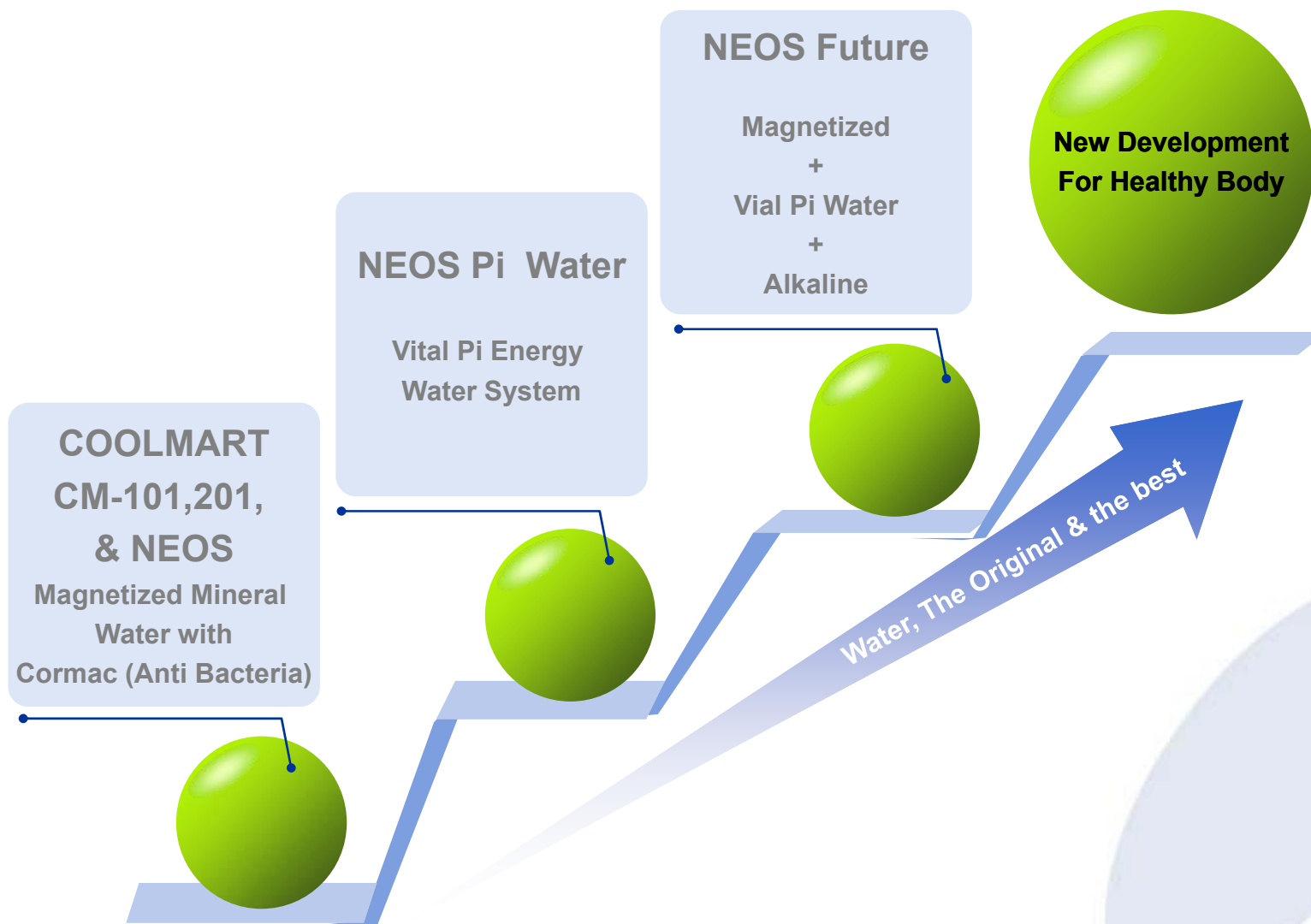
Organization



Business Field



Products Concept



Filtration Steps

Filtration

Micro Filter(1~10 μ), Ceramic Filter(0.1~1.0 μ) removes sediments and other substances.

Purification

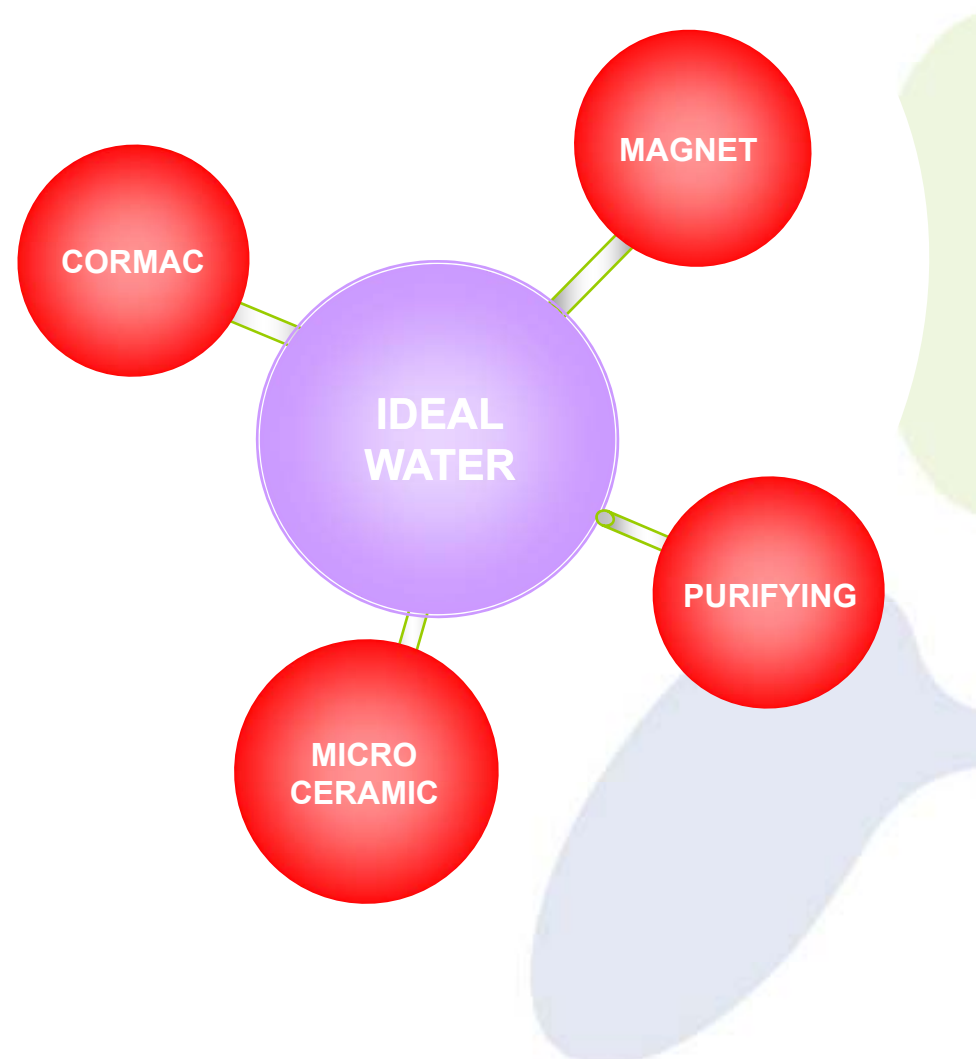
Purifying Filter removes harmful substances such as pigments, odors, chlorine and other impurities.

Sterilization and Mineralization

Cormac Filter sterilizes bacteria and maintains water to be fresh for along time.

Magnetization

Magnetic Device supplies abundant oxygen and hexagonal shape of molecule to vitalize human body.



Product, CM-101

Feature & Structure

STEP 1

Filtration

Micro-filter or Ceramic filter removes impurities such as sediments, rusts, dregs and other particulate matters in water.



STEP 3

Anti-bacteria Unit

"Cormac" has excellent functions to prevent contaminations of purified water by bacteria and E.coli, and maintain purified water fresh for a long time. It has additional functions to absorb heavy metals, enrich mineral ingredients, adjust pH of water to mild alkaline and improve water taste.



•Anti-Bacteria Effects

ITEMS		RESULTS					
		Synthetic Water	0 min	30 min	60 min	180 min	300 min
Bacteriella coli	Conc. CFU/ml.	1.0×10^7	1.0×10^7	1.2×10^7	9.0×10^7	2.0×10^7	1.0×10^7
	Removal Rate(%)	-	0	88	91	98	99
Bacillus subtilis	Conc. CFU/ml.	1.0×10^7	1.0×10^7	1.0×10^7	1.5×10^7	8.0×10^7	5.0×10^7
	Removal Rate(%)	-	0	81	85	92	95
Staphylococcus aureus	Conc. CFU/ml.	1.1×10^7	1.1×10^7	1.1×10^7	8.8×10^7	2.2×10^7	1.1×10^7
	Removal Rate(%)	-	0	90	92	98	99

STEP 2

Purification

Purifying filter removes chlorine, THMs, organic chemicals, heavy metals, pigments, unpleasant odors, colors, bad tastes and harmful substances in water.



STEP 4

Magnetization

Powerful Nd magnetic device makes water molecule cluster to be small which is called very effective for smooth metabolism of human body and prevention of many diseases.



Product, CM-101

Specification



Dimension (WXDXH) mm	335 X 335 X 380
Gross Weight	6.5kg(Glass) 4.7kg(Acryl)
Filtration Speed	
1) Micro Filter	8.0Liters/Hour
2) Ceramic Filter	1.5~20L/Hour
Upper Water Tank	6Liters
Lower Water Tank	12Liters



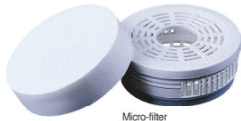
Product, CM-201

Feature & Structure

STEP 1

Filtration

Micro-filter removes impurities such as sediments, rusts, dregs and other particulate matters in water.



Micro-filter

STEP 3

Anti-bacteria Unit

"Cormac" has excellent functions to prevent contaminations of purified water by bacteria and E.coli, and maintain purified water fresh for a long time. It has additional functions to absorb heavy metals, enrich mineral ingredients, adjust pH of water to mild alkaline and improve water taste.



Cormac

•Anti-Bacteria Effects

ITEMS	RESULTS						
	Synthetic Water	0 min	30 min	60 min	180 min	300 min	
Escherichia Coli	Conc. CFU/ml	1.0×10^7	1.0×10^7	1.2×10^7	9.0×10^7	2.0×10^7	1.0×10^7
	Removal Rate(%)	-	0	88	91	98	99
Bacillus subtilis	Conc. CFU/ml	1.0×10^7	1.0×10^7	1.9×10^7	1.5×10^7	8.8×10^7	5.0×10^7
	Removal Rate(%)	-	0	81	85	92	95
Staphylococcus aureus	Conc. CFU/ml	1.1×10^7	1.1×10^7	1.1×10^7	8.8×10^7	2.2×10^7	1.1×10^7
	Removal Rate(%)	-	0	90	92	98	99

STEP 2

Purification

Purifying filter removes chlorine, THMs, organic chemicals, heavy metals, pigments, unpleasant odors, colors, bad tastes and harmful substances in water.



Purifying filter

STEP 4

Magnetization

Powerful Nd magnetic device makes water molecule cluster to be small which is called very effective for smooth metabolism of human body and prevention of many diseases.



Magnetic device



MAGNETIZED MINERAL WATER

Product, CM-201

Specification



Dimension (WDXH) mm	205 X 265 X 470
Gross Weight	3.6Kg
Filtration Speed	
1) Micro Filter	5.0Liters/Hour
2) Ceramic Filter	0.8 ~1.0L/Hour
Upper Water Tank	3.3Liters
Lower Water Tank	6.4Liters



Product, NEOS

Feature & Structure

STEP 1

Filtration

Micro-filter or Ceramic filter removes impurities such as sediments, rusts, dregs and other particulate matters in water.



STEP 4

Anti-bacteria Unit

"Cormac" has excellent functions to prevent contaminations of purified water by bacteria and E.coli, and maintain purified water fresh for a long time. It has additional functions to absorb heavy metals, enrich mineral ingredients, adjust pH of water to mild alkaline and improve water taste.



•Anti-Bacteria Effects

ITEMS		RESULTS					
		Synthetic Water	0 min	30 min	60 min	180 min	300 min
Escherichia coli	Conc. CFU/ml	1.0×10^7	1.0×10^7	1.2×10^7	9.0×10^6	2.0×10^6	1.0×10^6
	Removal Rate(%)	-	0	88	91	98	99
Bacillus subtilis	Conc. CFU/ml	1.0×10^7	1.0×10^7	1.9×10^7	1.5×10^7	8.0×10^6	5.0×10^6
	Removal Rate(%)	-	0	81	85	92	95
Staphylococcus aureus	Conc. CFU/ml	1.1×10^7	1.1×10^7	1.1×10^7	8.8×10^6	2.2×10^6	1.1×10^6
	Removal Rate(%)	-	0	90	92	98	99

STEP 2

Ion-Exchange Filter(IEF filter)

IEF filter reduces hardness and Nitrate ingredient in water. Accordingly it makes water soft and extends the efficiency of the purifying filter. The IEF filter is especially useful for water which contains high concentrated hardness with lime.



STEP 3

Purification

Purifying filter removes chlorine, THMs, organic chemicals, heavy metals, pigments, unpleasant odors, colors, bad tastes and harmful substances in water.



STEP 5

Magnetization

Powerful Nd magnetic device makes water molecule cluster to be small which is called very effective for smooth metabolism of human body and prevention of many diseases.



Product, NEOS

Specification



Dimension (WxDXH) mm	287 X 263 X 500
Gross Weight	4.7Kg
Filtration Speed	
1) Micro Filter	6.0Liters/Hour
2) Ceramic Filter	1.5~2.0L/Hour
Upper Water Tank	6Liters



Product, Vital Energy Pi Water (NEOS VE)

Feature & Structure

Step 1

Magnetization Unit

Its powerful Nd magnet device of 5,000 Gauss makes water cluster be small. It's known to be very effective for smooth metabolism of human body and prevention of many diseases.

Step 2

Sediment Filter

It normally removes impurities such as rust fluids, dregs, and other particulate matters from inlet water.



Step 3

Carbon Block Filter

It removes odors, bad tastes, chlorine, pigments, agricultural chemicals, detergents, carcinogens like THMs, heavy metals like Mn, As, Pb, Hg etc.

Step 4

Vital Energy Filter I

It increases minerals in water and makes smaller water cluster similar to that of bodily fluid. It also improves human metabolisms and enhances the human health.



Step 5

Ultra Filtration Filter

It removes impurities, particulate matters, parasites, and waterborne pathogens like bacteria and E.Coli through its small pore size of 0.01µm.

Step 6

ACF Filter

It removes odors, bad tastes, chlorine, pigments, agricultural chemicals, detergents, carcinogens like THMs, heavy metals like Mn, As, Pb, Hg etc.



Step 7

Vital Energy Filter II

It introduces vital energy into water, and inhibits harmful ions to human health. It also enhances anti-oxidative power, which removes free radicals and active oxygens known as the main cause of various diseases and aging. It is also effective in the prevention and cure of manifold diseases and cancers.

Step 8

Anti-Bacteria Unit

It has excellent functions to prevent secondary contamination of purified water by bacteria and E.Coli. It has a unique ability to generate abundant active hydrogen to remove activated oxygen in human body, known as the cause of aging and various diseases. It has additional functions to improve taste of water, to enhance mineral ingredients essential for human body and to maintain purified water in its fresh state for a time.



Product, Vital Energy Pi Water (NEOS VE)



Specification

Natural Flavored Magnetized Water Vital Energy Enhanced Water Purifying System

NEOS Vital Energy Water is very similar to bodily liquid.

Enjoy with our energized vital water that makes big difference in your life

GOODS DIMENSION	310 X 215 X 400 (mm)
CARTON DIMENSION	360 X 280 X 465 (mm)
NET / GROSS WEIGHT	6.3kgs / 7.0kgs
INNER WATER TANK	2.8 Liters
WATER PRESSURE	20~120 psi
FILTRATION CAPACITY	30 Liters / hr (20°C, 20 psi)



Certificates 1

FDA Certificate of Analysis for the Cormac Filter 1



RCH Pharmaceutical and Cosmetic Analytical Laboratories

2880-A Ana St. (PCT Building)
Rancho Dominguez, CA 90221

• Pharmaceuticals
• Cosmetics
• Foods

CERTIFICATE OF ANALYSIS

CLIENT: DOONAM INDUSTRY CO., LTD
218-2L, 429-1 NONUYN-DONG, NAMDONG-GU,
INCHEON, KOREA
PROJECT CONT. PERSON: KIWON KIM
PROJECT. NAME/NO.: YOUNG MYOUNG SOHN
SAMPLE I.D.: CARBON BLOCK FILTER

REPORTING DATE: 6/14/02
SAMPLE RECEIVED: 5/30/02
LABORATORY NO.: 02-2181
DATE SAMPLED : 5/30/02
FDA I.D. CODE : 2030950
INVESTIGATION : SEE BELOW

Parameter	Result	Detection Limit	Test Method	Date Analyzed
Dichlorofluoromethane	ND	1.00 ug/kg	8260	6/10/02
Chloromethane	ND	1.00 ug/kg	8260	6/10/02
Vinyl Chloride	ND	1.00 ug/kg	8260	6/10/02
Bromomethane	ND	1.00 ug/kg	8260	6/10/02
Trichlorofluoromethane	ND	1.00 ug/kg	8260	6/10/02
1,1-Dichloroethene	ND	1.00 ug/kg	8260	6/10/02
Methylene Chloride	ND	1.00 ug/kg	8260	6/10/02
Trans-1,2-Dichloroethene	ND	1.00 ug/kg	8260	6/10/02
1,1-Dichloroethane	ND	1.00 ug/kg	8260	6/10/02
2,2-Dichloropropane	ND	1.00 ug/kg	8260	6/10/02
Cis-1,2-Dichloroethene	ND	1.00 ug/kg	8260	6/10/02
Bromochloromethane	ND	1.00 ug/kg	8260	6/10/02
Chloroform	ND	1.00 ug/kg	8260	6/10/02
1,1,1-Trichloroethane	ND	1.00 ug/kg	8260	6/10/02
Carbon Tetrachloride	ND	1.00 ug/kg	8260	6/10/02
1,1-Dichloropropane	ND	1.00 ug/kg	8260	6/10/02
Benzene	ND	1.00 ug/kg	8260	6/10/02
1,2-Dichloroethane	ND	1.00 ug/kg	8260	6/10/02
Trichloroethene	ND	1.00 ug/kg	8260	6/10/02
1,2-Dichloropropane	ND	1.00 ug/kg	8260	6/10/02
Dibromomethane	ND	1.00 ug/kg	8260	6/10/02
Bromodichloromethane	ND	1.00 ug/kg	8260	6/10/02
Trans-1,3-Dichloropropene	ND	1.00 ug/kg	8260	6/10/02
Toluene	ND	1.00 ug/kg	8260	6/10/02
Cis-1,3-Dichloropropene	ND	1.00 ug/kg	8260	6/10/02
1,1,2-Trichloroethane	ND	1.00 ug/kg	8260	6/10/02
Tetrachloroethene	ND	1.00 ug/kg	8260	6/10/02
1,3-Dichloropropane	ND	1.00 ug/kg	8260	6/10/02
Dibromochloromethane	ND	1.00 ug/kg	8260	6/10/02
1,2-Dibromoethane	ND	1.00 ug/kg	8260	6/10/02
Chlorobenzene	ND	1.00 ug/kg	8260	6/10/02



A Subsidiary of RCH Research & Environmental Laboratories

FDA Certificate of Analysis for the Cormac Filter 2



RCH Pharmaceutical and Cosmetic Analytical Laboratories

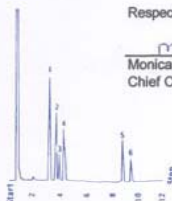
2880-A Ana St. (PCT Building)
Rancho Dominguez, CA 90221

• Pharmaceuticals
• Cosmetics
• Foods

PAGE 2 OF 02-2181 CARBON BLOCK FILTER

Parameter	Result	Detection Limit	Test Method	Date Analyzed
Ethylbenzene	ND	1.00 ug/kg	8260	6/10/02
1,1,1,2-Tetrachloroethane	ND	1.00 ug/kg	8260	6/10/02
MP-Xylene	ND	1.00 ug/kg	8260	6/10/02
O-Xylene	ND	1.00 ug/kg	8260	6/10/02
Styrene	ND	1.00 ug/kg	8260	6/10/02
Bromoform	ND	1.00 ug/kg	8260	6/10/02
Isopropylbenzene	ND	1.00 ug/kg	8260	6/10/02
1,1,2,2-Tetrachloroethane	ND	1.00 ug/kg	8260	6/10/02
Bromobenzene	ND	1.00 ug/kg	8260	6/10/02
n-Propylbenzene	ND	1.00 ug/kg	8260	6/10/02
1,2,3-Trichloropropane	ND	1.00 ug/kg	8260	6/10/02
2-chlorotoluene	ND	1.00 ug/kg	8260	6/10/02
1,3,5-Trimethylbenzene	ND	1.00 ug/kg	8260	6/10/02
4-Chlorotoluene	ND	1.00 ug/kg	8260	6/10/02
Ter-Butylbenzene	ND	1.00 ug/kg	8260	6/10/02
1,2,4-Trimethylbenzene	ND	1.00 ug/kg	8260	6/10/02
Sec-Butylbenzene	ND	1.00 ug/kg	8260	6/10/02
4-Isopropyltoluene	ND	1.00 ug/kg	8260	6/10/02
1,3-Dichlorobenzene	ND	1.00 ug/kg	8260	6/10/02
1,4-Dichlorobenzene	ND	1.00 ug/kg	8260	6/10/02
n-Butylbenzene	ND	1.00 ug/kg	8260	6/10/02
1,2-Dichlorobenzene	ND	1.00 ug/kg	8260	6/10/02
1,2-Dibromo-3-chloropropane	ND	1.00 ug/kg	8260	6/10/02
1,2,4-Trichlorobenzene	ND	1.00 ug/kg	8260	6/10/02
Hexachlorobutadiene	ND	1.00 ug/kg	8260	6/10/02
Naphthalene	ND	1.00 ug/kg	8260	6/10/02
1,2,3-Trichlorobenzene	ND	1.00 ug/kg	8260	6/10/02
Acetone	ND	1.00 ug/kg	8260	6/10/02
2-Butanone (MEK)	ND	1.00 ug/kg	8260	6/10/02
4-Methyl-2-Pentanone	ND	1.00 ug/kg	8260	6/10/02
2-Hexanone	ND	1.00 ug/kg	8260	6/10/02
MTBE	ND	1.00 ug/kg	8260	6/10/02

ND = The concentration is below the detection limit or is non-detected.
Note: The above analyses were performed by a FDA certified laboratories.



A Subsidiary of RCH Research & Environmental Laboratories

Respectfully Submitted,
Monica Ghadiali
Monica Ghadiali
Chief Chemist

Respectfully Submitted,
Karl Caterson
Karl Caterson
Laboratory Manager

Certificates 2

Report of Mineral Increase

No.KEWI일0208053-2

1/1 The End.

Clean Environment, Safe Water

Korea Environment & Water Works Institute

86-3 6Ga, Yangpyung-Dong, Youngdungpo-Gu, Seoul, Korea /TEL 82-2-2637-1234 /FAX 82-2-2631-8767

Report Of Laboratory Tests

- Representative : Young Myung, SHON
- Name(Company) : DOONAM Industry Co., LTD.
- Address : 21B-2L, #429-1, Nonhyun-Dong, Namdong-Gu, Incheon, Korea
- Commodity : CORMAC
- Date Of Receipt : Aug. 24, 2002
- Issue Date : Aug 30, 2002
- Analysis Date : Aug. 24 ~ Aug. 29

ITEMS	UNIT	RESULTS				REMARK
		0 hr	8 hr	24 hr	48 hr	
Ca	mg/L	Not Detected	0.23	10.4	29.4	-
Mg	mg/L	Not Detected	Not Detected	1.40	3.09	-

※ Purpose : Presentation

※ Testing method : EPA Method 200.7

※ Testing condition : After submerging test sample into distilled water and 0, 8, 24 hours and 48 hours elapsed, analyzed the extraction water.

※ Don'T Rewrite This Report Without Written Admission.

Korea Environment & Water Works Institute

FPC05-3(0)

Korea Environment & Water Works Institute

A4(210×297)

Report of Bacterial Removal Rate

No.KEWI일0208053-1

1/1 The End.

Clean Environment, Safe Water

Korea Environment & Water Works Institute

86-3 6Ga, Yangpyung-Dong, Youngdungpo-Gu, Seoul, Korea /TEL 82-2-2637-1234 /FAX 82-2-2631-8767

Report Of Laboratory Tests

- Representative : Young Myung, SHON
- Name(Company) : DOONAM Industry Co., LTD.
- Address : 21B-2L, #429-1, Nonhyun-Dong, Namdong-Gu, Incheon, Korea
- Commodity : CORMAC
- Date Of Receipt : Aug. 24, 2002
- Issue Date : Aug 30, 2002
- Analysis Date : Aug. 24 ~ Aug. 29

ITEMS		UNIT	RESULTS						비 고
			Synthetic Water	0 min	30 min	60 min	180 min	300 min	
Eschericia Coli	Conc.	CFU/mL	1.0×10 ⁴	1.0×10 ⁴	1.2×10 ³	9.0×10 ²	2.0×10 ²	1.0×10 ²	
	Removal Rate	%	-	0	88	91	98	99	
Bacillus subtilis	Conc.	CFU/mL	1.0×10 ⁴	1.0×10 ⁴	1.9×10 ³	1.5×10 ³	8.0×10 ²	5.0×10 ²	
	Removal Rate	%	-	0	81	85	92	95	
Staphylococcus aureus	Conc.	CFU/mL	1.1×10 ⁴	1.1×10 ⁴	1.1×10 ³	8.8×10 ²	2.2×10 ²	1.1×10 ²	
	Removal Rate	%	-	0	90	92	98	99	

※ Purpose : Presentation

※ Testing method : Pour Plate Method

※ Testing condition : After submerging test sample into the synthetic water and 0, 30, 60, 180 minutes and 300 minutes elapsed, analyzed the synthetic water.

※ Don'T Rewrite This Report Without Written Admission.

Korea Environment & Water Works Institute

FPC05-3(0)

Korea Environment & Water Works Institute

A4(210×297)

Thank you

Tel. : 82-32-821-6490~4

Fax : 82-32-821-1661

dn123@chol.com